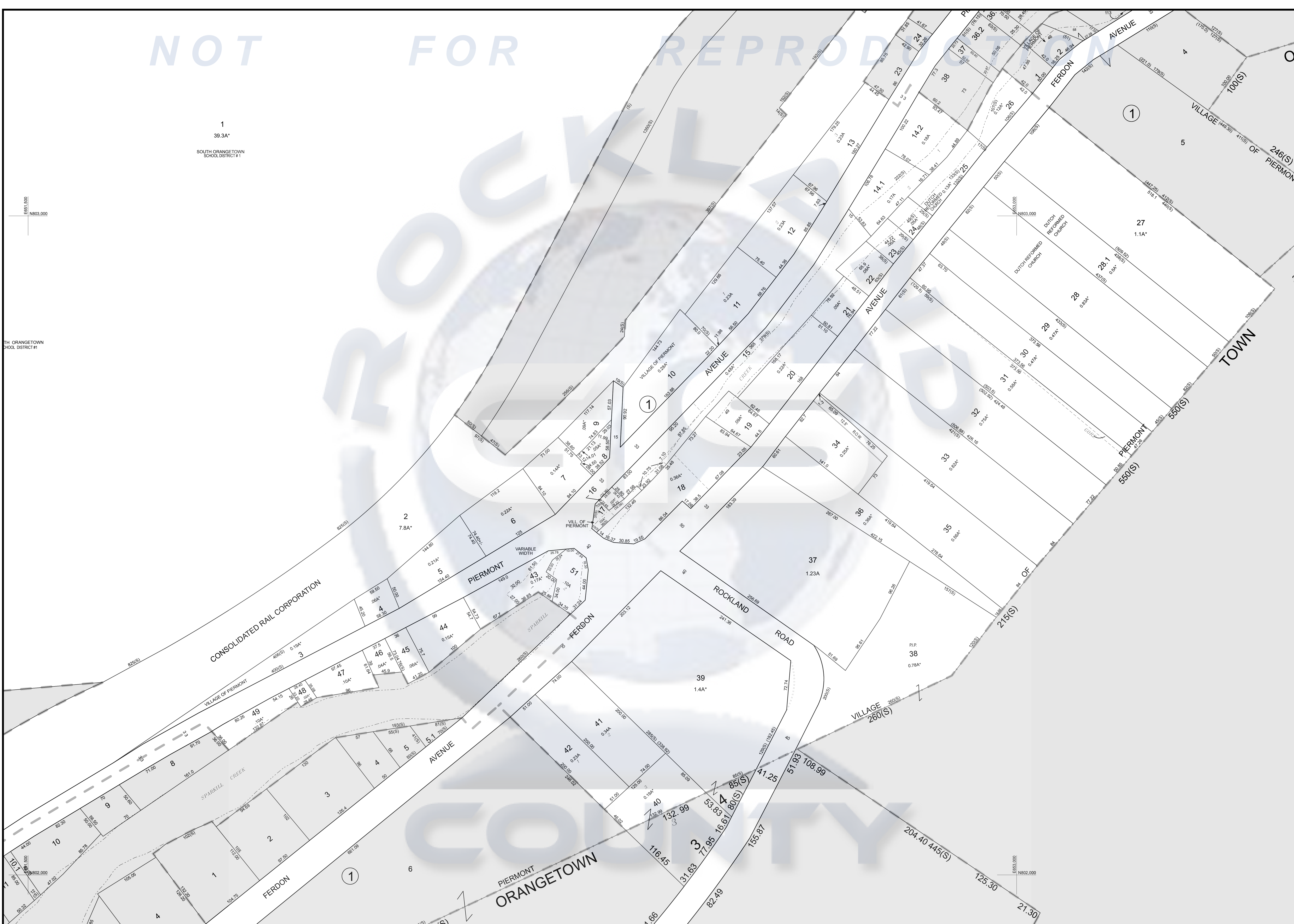


NOT FOR REPRODUCTION

1  
39.3A\*  
SOUTH ORANGETOWN  
SCHOOL DISTRICT #1

EP651.500  
N803.000

TH ORANGETOWN  
SCHOOL DISTRICT #1



**SEWALL**  
JAMES W. SEWALL COMPANY / Since 1880

Digital Map Converted from Intergraph to AutoCAD Sept. 1993  
Digital Map Converted from NAD 27 to NAD 83 Sept. 2000  
Digital Map Converted from AutoCAD to ESRI GDB Oct. 2004

MAP REVISIONS			
DATE	MADE BY	REVISIONS	
1997	SPO	DELE. BL. 1, PCL. 50	
1995	SPO	ADDED BL. 1, PCL. 50	
1994	MSR	DELE. BL. 1, PCL. 50	
1994	SPO	ADDED BL. 1, PCL. 50, 51	

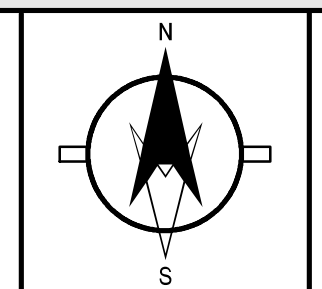
SCHOOL AND SPECIAL DISTRICTS			
DATE	MADE BY	REVISIONS	
		SCHOOL: SO ORNGTN CSD 302401	
		FIRE: ORANGEBURG FD002	
		WATER: SPRING VALLEY	
		SEWER: OR SW200, OR SW200	
		SEWER: OR SW200, OR SW200	
		LIBRARY: TAPPAN LIB01	
		AMB: NYACK AM002	

COUNTY OF ROCKLAND	
AMBULANCE DIST.	—▲—
FIRE DIST.	— —
SEWER DIST.	—○—
WATER DIST.	—□—
SCHOOL DIST.	—◇—
REFUSE DIST.	—△—
LIBRARY DIST.	—◇—
LIGHTING DIST.	— —

LEGEND	
HISTORIC SUBDIV. LINE	—·—·—
SEWER COMMON OWNER	— — —
COUNTY LINE	—+—+—
STATE LINE	—=—=—
TOWN LINE	—- - - -
VILLAGE LINE	—·—·—
TAX MAP PARCEL NO.	①
COORD. VALUES AND 10' POINTS	+

TAX MAP BLOCK NUMBER	
REPLICATED DIMENSION	①
DEED ACRES	②
CALCULATED ACRES	③
DEED DIMENSION	④
SCALED DIMENSION	⑤
ADD. REFERENCE DIMS.	⑥
HISTORIC SUBDIV. LOT NO.	⑦

75.61	75.62	75.63
75.69	75.71	
75.77	75.78	75.18



REVISED THROUGH  
**FEBRUARY 28, 2013**

TAX MAP  
**VILLAGE OF PIERMONT**  
ROCKLAND COUNTY, NEW YORK

75.70