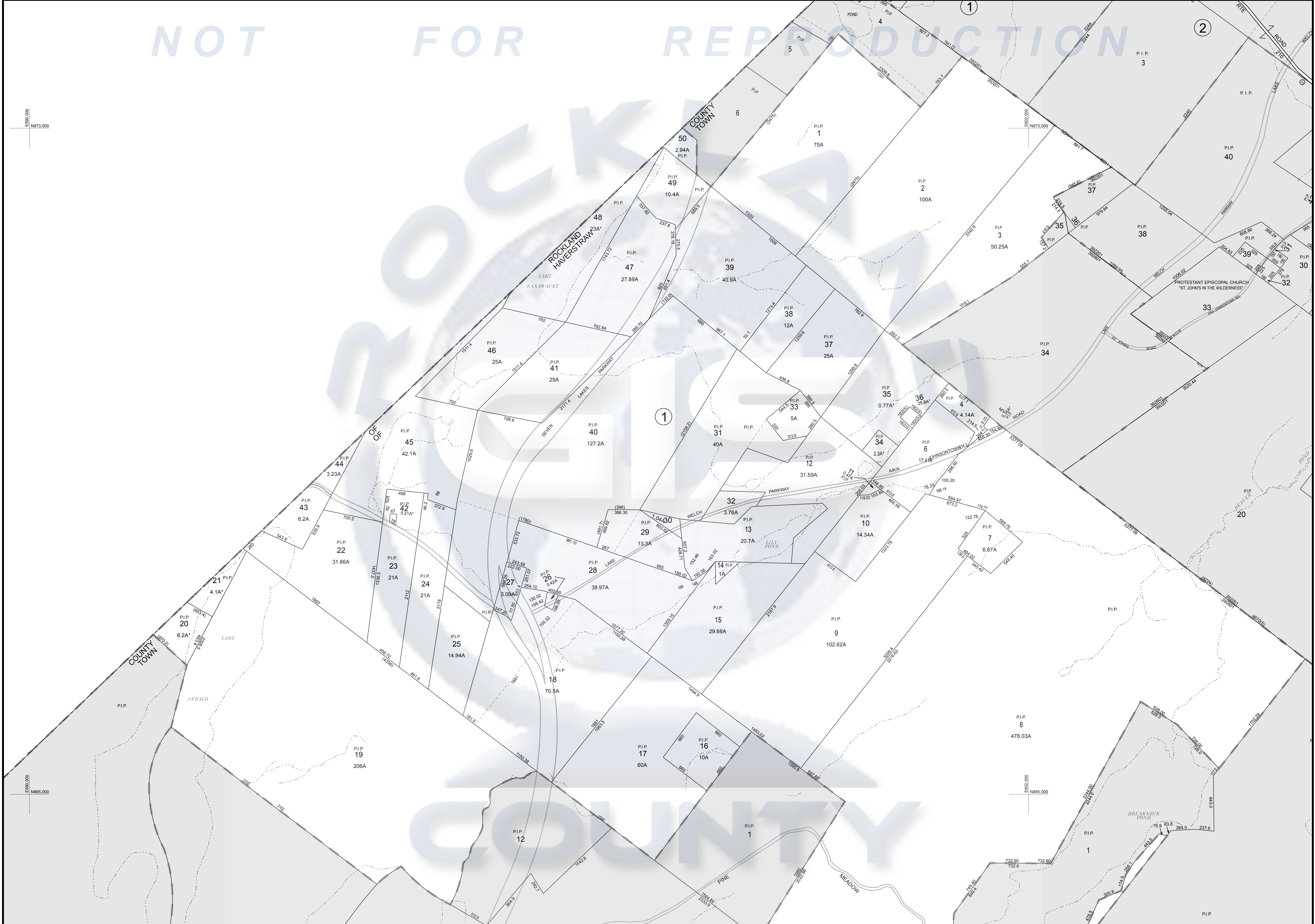


NOT FOR REPRODUCTION

E 690,000  
N 873,000

E 690,000  
N 865,000



**SEWALL**  
JAMES W. SEWALL COMPANY / Since 1880

Digital Map Converted from Intergraph to AutoCAD Sept. 1991  
Digital Map Converted from NAD 27 to NAD 83 Sept. 2000  
Digital Map Converted from AutoCAD to ESRI GDB Oct. 2004

MAP REVISIONS			
DATE	MADE BY	REVISIONS	

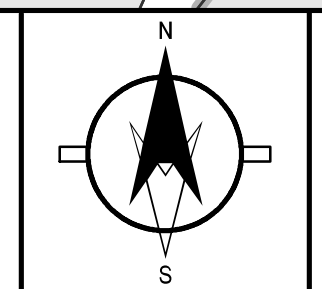
SCHOOL AND SPECIAL DISTRICTS			
DATE	MADE BY	REVISIONS	

COUNTY OF ROCKLAND	
AMBULANCE DIST.	—▲—
FIRE DIST.	—■—
SEWER DIST.	—□—
WATER DIST.	—○—
SCHOOL DIST.	—◇—
REFUSE DIST.	—△—
LIBRARY DIST.	—▽—
LIGHTING DIST.	—◇—

LEGEND	
HISTORIC SUBDIV. LINE	—●—
SENIOR COMMON OWNER	—■—
COUNTY LINE	—■—
STATE LINE	—■—
TOWN LINE	—■—
VILLAGE LINE	—■—
TAX MAP PARCEL NO.	—■—
COORD. VALUES (4-DIGIT)	—■—

TAX MAP BLOCK NUMBER	REPLICATED DIMENSION	DIED ACRES	1.03A

REVISED THROUGH	12.00	13.00
<b>FEBRUARY 28, 2013</b>		
	22.00	23.00
	24.00	



REVISOR'S STATEMENT  
This map was prepared for TAX PURPOSES only and is not to be reproduced or used for surveying or conveyancing.

**TOWN OF HAVERSTRAW**  
ROCKLAND COUNTY, NEW YORK

**17.00**