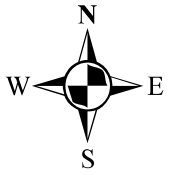
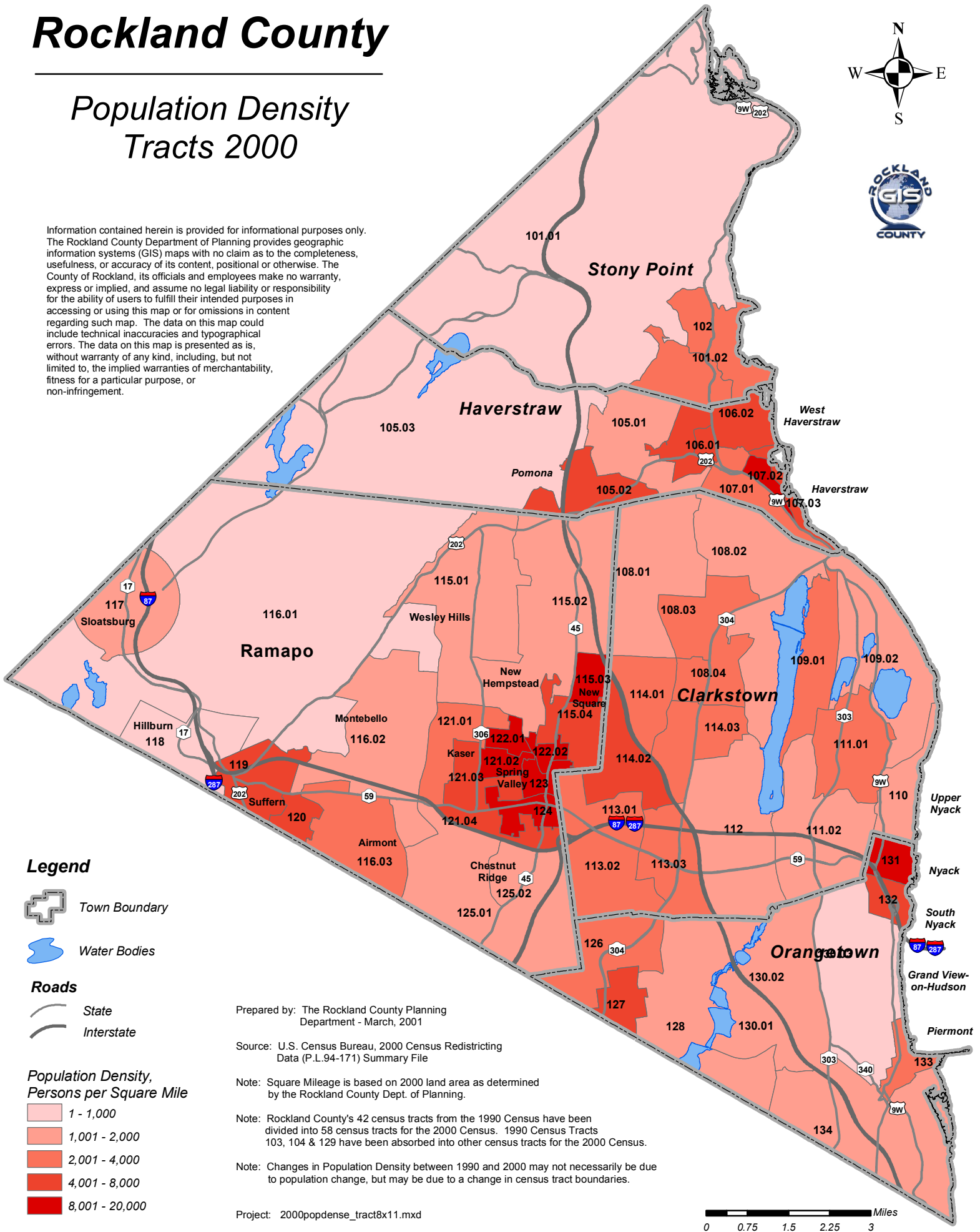


Rockland County

Population Density Tracts 2000



Information contained herein is provided for informational purposes only. The Rockland County Department of Planning provides geographic information systems (GIS) maps with no claim as to the completeness, usefulness, or accuracy of its content, positional or otherwise. The County of Rockland, its officials and employees make no warranty, express or implied, and assume no legal liability or responsibility for the ability of users to fulfill their intended purposes in accessing or using this map or for omissions in content regarding such map. The data on this map could include technical inaccuracies and typographical errors. The data on this map is presented as is, without warranty of any kind, including, but not limited to, the implied warranties of merchantability, fitness for a particular purpose, or non-infringement.



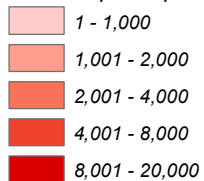
Legend



Roads



Population Density, Persons per Square Mile



Prepared by: The Rockland County Planning Department - March, 2001

Source: U.S. Census Bureau, 2000 Census Redistricting Data (P.L.94-171) Summary File

Note: Square Mileage is based on 2000 land area as determined by the Rockland County Dept. of Planning.

Note: Rockland County's 42 census tracts from the 1990 Census have been divided into 58 census tracts for the 2000 Census. 1990 Census Tracts 103, 104 & 129 have been absorbed into other census tracts for the 2000 Census.

Note: Changes in Population Density between 1990 and 2000 may not necessarily be due to population change, but may be due to a change in census tract boundaries.

Project: 2000popdense_tract8x11.mxd

