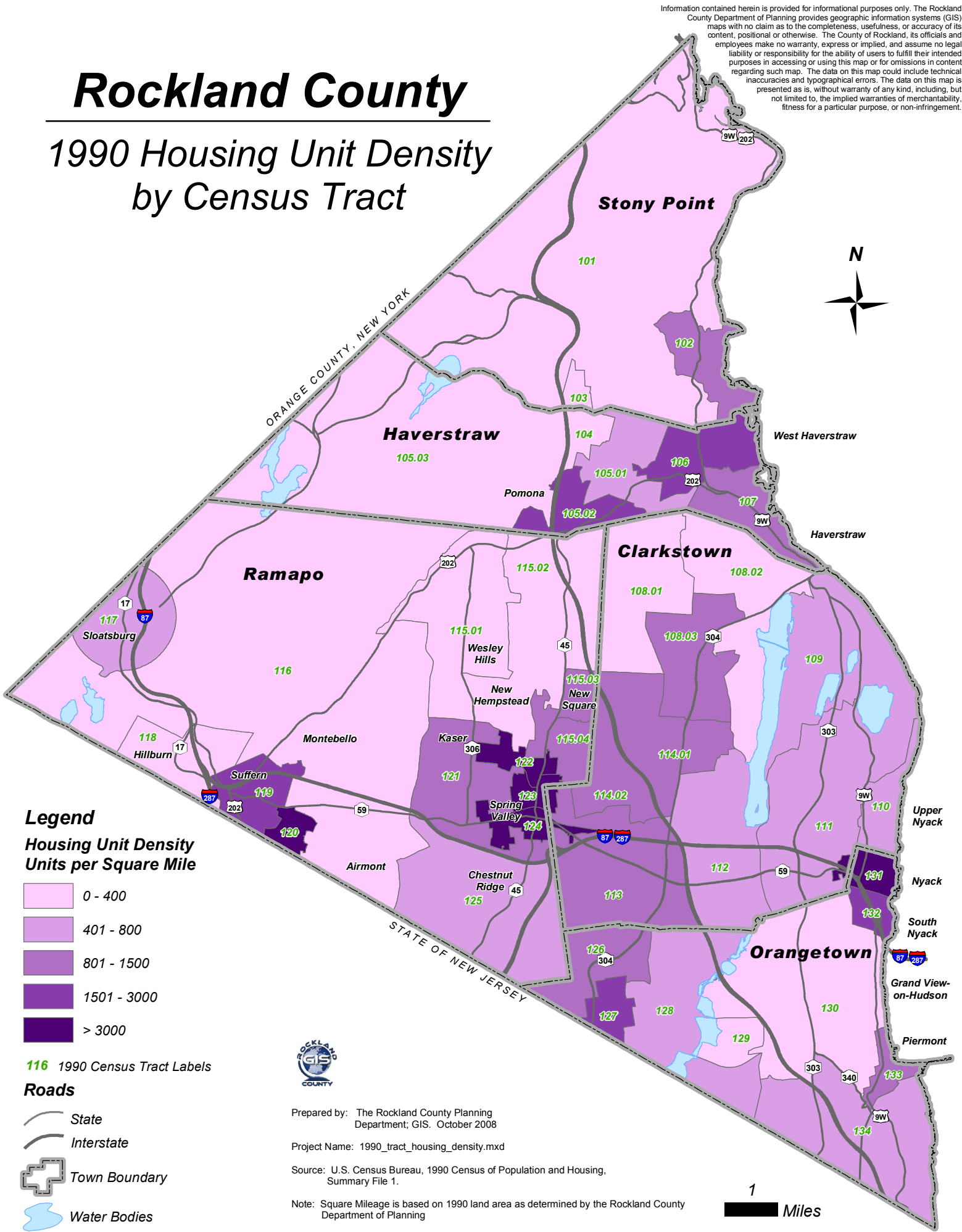


Information contained herein is provided for informational purposes only. The Rockland County Department of Planning provides geographic information systems (GIS) maps with no claim as to the completeness, usefulness, or accuracy of its content, positional or otherwise. The County of Rockland, its officials and employees make no warranty, express or implied, and assume no legal liability or responsibility for the ability of users to fulfill their intended purposes in accessing or using this map or for omissions in content regarding such map. The data on this map could include technical inaccuracies and typographical errors. The data on this map is presented as is, without warranty of any kind, including, but not limited to, the implied warranties of merchantability, fitness for a particular purpose, or non-infringement.

Rockland County

1990 Housing Unit Density by Census Tract



Legend

Housing Unit Density Units per Square Mile

- 0 - 400
- 401 - 800
- 801 - 1500
- 1501 - 3000
- > 3000

116 1990 Census Tract Labels

Roads

- State
- Interstate
- Town Boundary
- Water Bodies



Prepared by: The Rockland County Planning Department; GIS. October 2008

Project Name: 1990_tract_housing_density.mxd

Source: U.S. Census Bureau, 1990 Census of Population and Housing, Summary File 1.

Note: Square Mileage is based on 1990 land area as determined by the Rockland County Department of Planning

