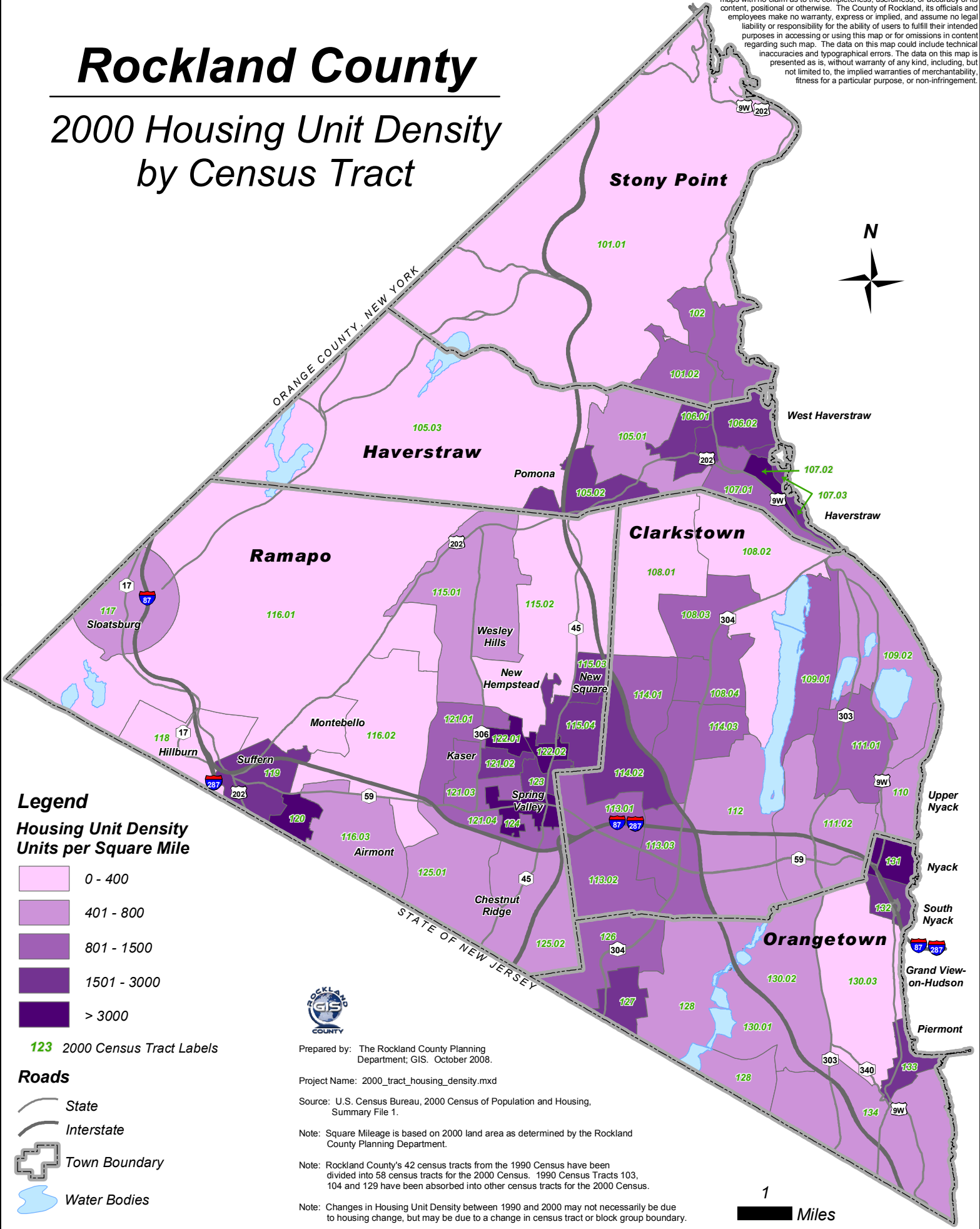


Information contained herein is provided for informational purposes only. The Rockland County Department of Planning provides geographic information systems (GIS) maps with no claim as to the completeness, usefulness, or accuracy of its content, positional or otherwise. The County of Rockland, its officials and employees make no warranty, express or implied, and assume no legal liability or responsibility for the ability of users to fulfill their intended purposes in accessing or using this map or for omissions in content regarding such map. The data on this map could include technical inaccuracies and typographical errors. The data on this map is presented as is, without warranty of any kind, including, but not limited to, the implied warranties of merchantability, fitness for a particular purpose, or non-infringement.

Rockland County

2000 Housing Unit Density by Census Tract



Legend

Housing Unit Density Units per Square Mile

- 0 - 400
- 401 - 800
- 801 - 1500
- 1501 - 3000
- > 3000

123 2000 Census Tract Labels

Roads

- State
- Interstate
- Town Boundary
- Water Bodies



Prepared by: The Rockland County Planning Department; GIS. October 2008.

Project Name: 2000_tract_housing_density.mxd

Source: U.S. Census Bureau, 2000 Census of Population and Housing, Summary File 1.

Note: Square Mileage is based on 2000 land area as determined by the Rockland County Planning Department.

Note: Rockland County's 42 census tracts from the 1990 Census have been divided into 58 census tracts for the 2000 Census. 1990 Census Tracts 103, 104 and 129 have been absorbed into other census tracts for the 2000 Census.

Note: Changes in Housing Unit Density between 1990 and 2000 may not necessarily be due to housing change, but may be due to a change in census tract or block group boundary.

1

Miles