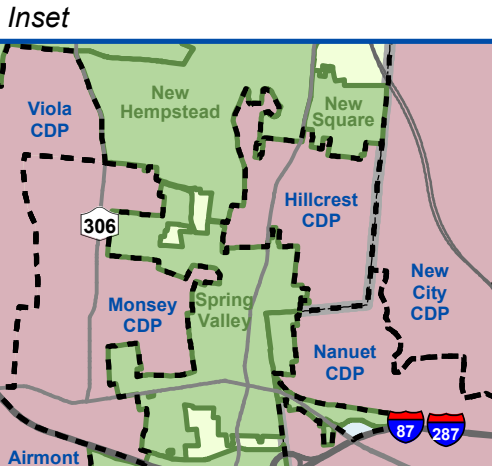
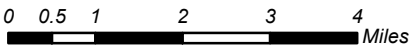
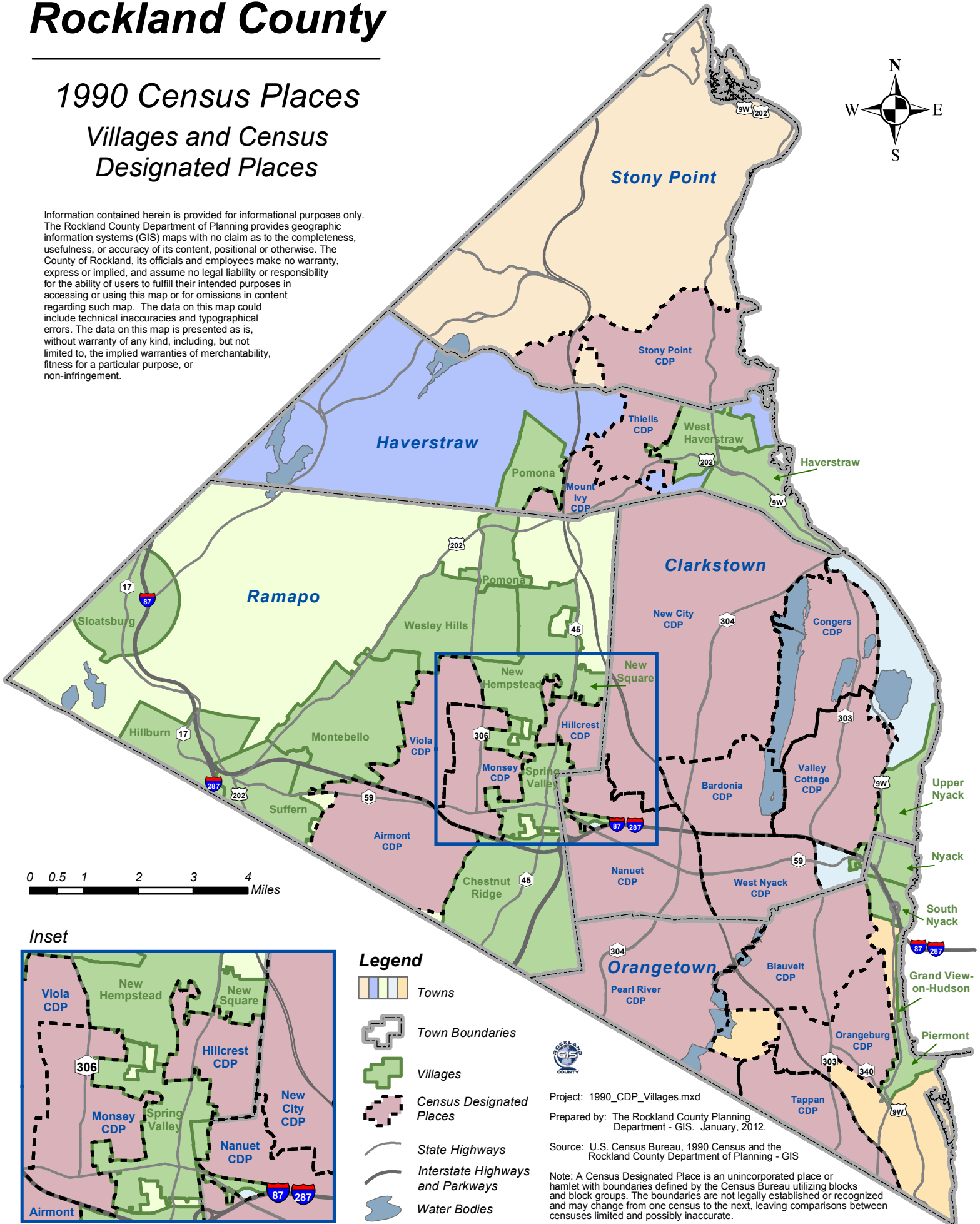


# Rockland County

## 1990 Census Places Villages and Census Designated Places

Information contained herein is provided for informational purposes only. The Rockland County Department of Planning provides geographic information systems (GIS) maps with no claim as to the completeness, usefulness, or accuracy of its content, positional or otherwise. The County of Rockland, its officials and employees make no warranty, express or implied, and assume no legal liability or responsibility for the ability of users to fulfill their intended purposes in accessing or using this map or for omissions in content regarding such map. The data on this map could include technical inaccuracies and typographical errors. The data on this map is presented as is, without warranty of any kind, including, but not limited to, the implied warranties of merchantability, fitness for a particular purpose, or non-infringement.



- Legend**
- Towns
  - Town Boundaries
  - Villages
  - Census Designated Places
  - State Highways
  - Interstate Highways and Parkways
  - Water Bodies

Project: 1990\_CDP\_Villages.mxd  
 Prepared by: The Rockland County Planning Department - GIS. January, 2012.  
 Source: U.S. Census Bureau, 1990 Census and the Rockland County Department of Planning - GIS

Note: A Census Designated Place is an unincorporated place or hamlet with boundaries defined by the Census Bureau utilizing blocks and block groups. The boundaries are not legally established or recognized and may change from one census to the next, leaving comparisons between censuses limited and possibly inaccurate.